

H

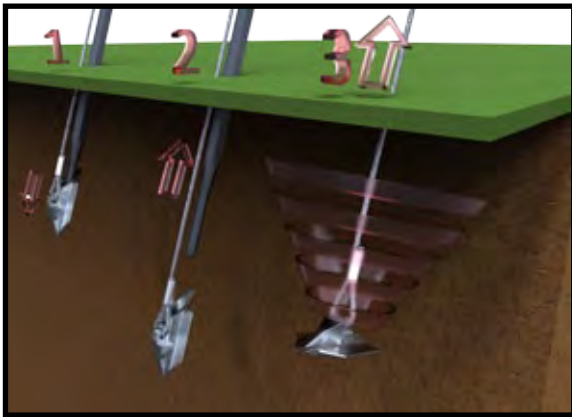
HULK EARTH ANCHORS

HULK Earth Anchors

PORTABLE STRUCTURE ANCHORING SYSTEMS

- Concrete free anchoring solution.
- Fast, labour saving installation.
- Anchors proof tested during installation.
- Immediate holding capacities.
- Suits all soil conditions.

Hulk Earth Anchors and tie down accessories are available in a variety of configurations to provide the best anchoring and tethering solutions to protect your assets from cyclone, flood and earthquake damage. The HULK "H" range of earth anchors are ideally suited to tying down assets such as portable houses, water tanks, shipping containers, domed structures, conveyors, portable lighting and anything else you don't want washed away, blown away or shaken apart.



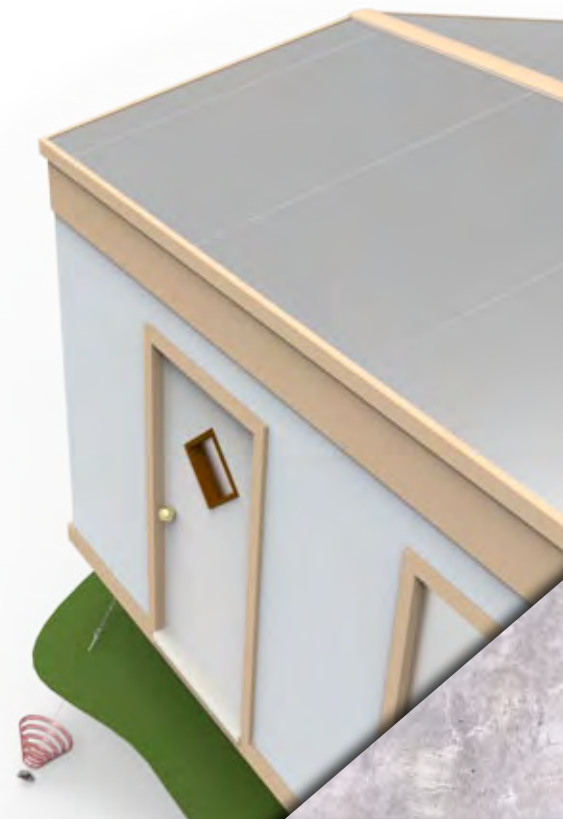
HOW HULK EARTH ANCHORS WORK

- 1) Drive the HULK Earth Anchor into the ground with a reusable HULK Smasher Rod.
- 2) Remove the HULK Smasher Rod.
- 3) Anchor Lock the HULK Earth Anchor while simultaneously Proof Testing.

HULK "H" RANGE ANCHORS HOLDING CAPACITY IN kN

Soil Description	Blow Count (N)	HULK H50	HULK H80	HULK H110
Very dense/cemented sands; Coarse gravel and cobbles	60+	45 (1,3)	45 (1,3)	45 (1,3)
Dense fine compacted sands, very hard silts or clays	45-60	27 -45 (2,3,4)	45 (2,3)	45 (2,3)
Dense Clays, Sands and gravels, hard silts and clays	35-50	18 - 27 (4)	24 - 36 (4)	45 (2,3)
Medium dense sandy gravel, stiff to hard silts and clays	24-40	13 - 18 (4)	18 - 22 (4)	23 - 30 (4)
Medium Dense Coarse sand and sandy gravel, Stiff to Very stiff silts and Clays	14-25	9 - 13 (4)	14 - 18 (4)	18- 23 (4)
Loose to Medium Dense Fine to Coarse Sand: Firm to Stiff Clays and Silts	7-14	7 - 11 (4)	9 - 16 (4)	13 - 20 (4)
Loose Fine Sand, Alluvium, Soft Clays, Fine saturated Silty Sand	4-8	4 - 7 (4,6)	6 - 10 (4,6)	8 - 13 (4,6)

- 1) Drilled pilot hole required for efficient installation
- 2) Ease of installation may be improved by drilling a pilot hole
- 3) Holding capacity limited by ultimate strength of anchors
- 4) Holding capacity limited by soil structure
- 5) Not recommended in these soils
- 6) Wide variation in soil properties reduces prediction accuracy. Pre construction field test is recommended.
- 7) Based on an installation depth of 1.2m cabled with an 8mm wire rope tendon.



HULK EARTH ANCHORS & ACCESSORIES

Due to the varied nature of site conditions we stock and supply a wide variety of fittings, fixtures and terminations which facilitate the connection of your movable assets to the HULK earth anchors.

PT-45 PROOF TESTER

The HULK PT-45 proof tester is designed to Load Lock and Proof Test the HULK H50, H80, H110 Earth Anchors. Anchor capacity is easily read on the included gauge calibrated in kN.



H50

H80

H110

SMASHER RODS

Manufactured from high quality impact resistant steel, HULK Smasher Rods are available in a variety of combinations including Hand Smasher Rods, fixed length and extendable Power Smasher Rods.



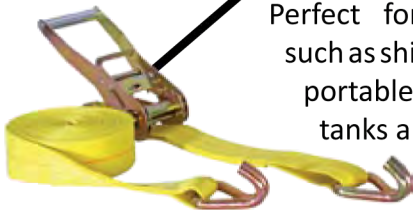
STRAINING KIT

Multipurpose straining kit for terminating and tensioning. Comes complete with bolt on brackets, turnbuckle, chain and three shackles.



RATCHET STRAPS

Perfect for lashing assets such as shipping containers, portable toilets, water tanks and caravans.



RIGGING ACCESSORIES

We stock a wide variety of wire rope fittings for all your termination and straining requirements.



For further advice and technical information visit www.hulkearthanchors.com or call 1300 692 626

FOR CYCLONE, FLOOD AND EARTHQUAKE PROTECTION

HULK CARRIES BULK



Distributed By:



www.hulkearthanchors.com
1300 MyAncor (692626)



CITISCAPE

Phone: 1300 512 484 | Email: sales@citiscap.com.au
WWW.CITISCAPE.COM.AU

© Anchoring Rope And Rigging, Australian Design Registration No. 351550, Patent Pending